

YOUR FIRST PLACE TO LOOK.

**Metzger**  
AUTOTEILE



**Hoses & Lines**  
Quality that sets standards

# Hoses and lines from the market leader Metzger Autoteile – quality that sets standards.

Our comprehensive range of hoses and lines delivers top-tier quality, precise fit, and maximum safety – covering almost every common vehicle application. We focus not just on variety, but on depth: our portfolio is continuously expanded and refined to meet the evolving demands of the market.

What sets us apart: Metzger Autoteile develops products in close collaboration with manufacturers, continuously optimizing them for the aftermarket. The result: practical, easy-to-install, and durable solutions that make a difference – today and tomorrow.

For over 45 years, Metzger Autoteile has stood for expertise, reliability, and continuous innovation in the international spare parts market.

**With Metzger Autoteile, you're always ahead of the game.**

Thanks to our innovation, experience, and a product range that professionals worldwide trust.



Charge Air Hoses	4
Fuel Overflow Hoses	5
Radiator Hoses	5
Brake Lines	6
Coolant Tubes	6
Air Supply Hoses	7
Hydraulic Hoses, Steering	7
Crankcase Ventilation	8
Fuel Lines	8
Intake Hoses, Air Filter	9
Air Conditioning Lines	9
Universal Hoses	10-12
Additional Hoses and Lines	13

## AWARDED EXCELLENCE



## Quality you can trust – tested down to every detail.

At Metzger Autoteile, quality isn't by chance. It is the result of defined processes, years of experience, and technical expertise. Our dedicated quality assurance team oversees every product from development to market launch.

In collaboration with suppliers and manufacturers, every component is analyzed, specified, and purposefully optimized. Our hoses and lines undergo rigorous testing, including material analyses, dimensional and fit checks, as well as functional and stress tests.

Each product is carefully evaluated and documented. Only after passing strict technical approval is it added to the Metzger Autoteile program and made available to the aftermarket.

This systematic approach ensures consistently high product quality, reliable performance, and peace of mind in every application.

**Metzger Inhouse QA Lab insight:**  
Function test of NO<sub>x</sub> sensors.



# Charge Air Hoses

## The New Standard for Durability and Performance.

Discover the optimized charge air hoses from Metzger Autoteile.

Our charge air hoses set new benchmarks in quality and performance. State-of-the-art technology, optimized design, and high-quality materials ensure reliable operation and exceptional longevity.

### Car applications:

- Art. No. 2400972 (OE 144601765R\*), e.g. Renault Master III
- Art. No. 2400427 (OE 5801359166\*), e.g. Iveco Daily V, Daily VI
- Art. No. 2400263 (OE A 212 528 08 82\*), e.g. Mercedes-Benz E-Class (212)

\* OE numbers for reference only.



\* Leading market position for passenger car charge air hoses in the independent aftermarket (IAM) in Europe, based on range coverage. Analysis based on standard aftermarket catalogs, as of 01/2026.



Learn more

## Charge Air Hose 2401418

(replaces OE part 2400561)

Available as an **aftermarket component** since 01/2026.



### Vehicle Applications:

- Opel/Vauxhall OE 39202874\*
- Astra J (P10), Zafira Tourer (P12)

\* OE numbers for reference only.



Learn more

## All Metzger charge air hoses are available with connectors/clamps.

Depending on the item, hoses are either delivered with pre-assembled HENN connectors or can be equipped with KALE clamps, linked as accessories in TecDoc.

easy assembly and space saving with compact housing and screw design.



Spring system reserve clamping force, balancing temperature changes, dynamic loads and diameter changes

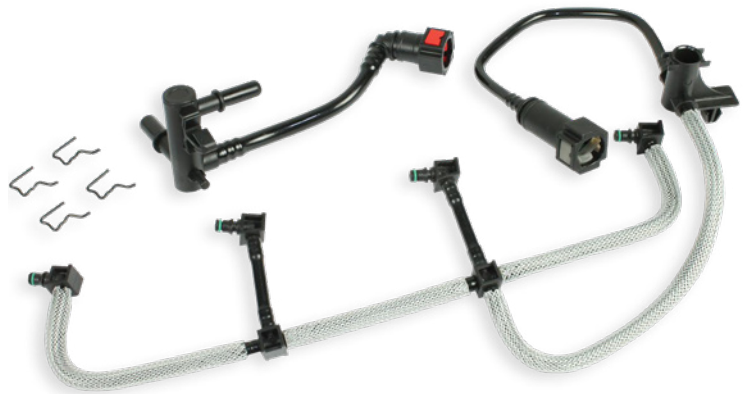
pre-positioned assembly of the clamp and hence easy final assembly

# Fuel Overflow Hoses

**Efficient return flow and maximum sealing for modern injection systems.**

Our fuel overflow hoses impress with precise dimensional accuracy, long-lasting sealing performance, and durable material quality – even under extreme thermal and mechanical stress. They are specifically designed to meet the requirements of modern high-pressure systems and ensure maximum operational reliability in continuous use.

Thanks to precise manufacturing, high-quality materials, and proven connection technologies, our solutions ensure reliable return of leak-off fuel – with minimal wear and excellent resistance to fuels, additives, and environmental influences.



Learn more

# Radiator Hoses

**Reliable radiator hoses for consistent flow, high durability, and long-lasting performance.**

Our radiator hoses stand for uncompromising quality and maximum operational reliability. They are manufactured from carefully selected, high-temperature-resistant elastomers and are specifically designed for continuous use in demanding cooling systems. Thanks to their high resistance to pressure and media, they ensure a consistent and reliable coolant flow – even under significant temperature fluctuations and dynamic load changes.

Precise manufacturing ensures an optimal fit and reliable sealing at all connection points.



## Brake Lines

**Safe. Precise. Reliable.**



Don't compromise on safety – rely on the quality of Metzger Autoteile. Our brake lines stand for maximum precision, long service life, and absolute reliability – developed according to OE standards and tested under the strictest quality requirements.

- Precise fit, corrosion-resistant, and pressure-resistant
- Easy installation – perfect performance

**Metzger brake lines – for confidence on every journey.**

## Coolant tubes

**High-quality coolant tubes for secure routing, minimal losses, and maximum system stability.**



Our coolant pipes represent the highest tested quality and maximum process reliability. From the selection of raw materials to the final inspection, we ensure that all components meet our strict quality standards.

Through defined testing procedures, regular random checks, and comprehensive functional and stress tests, we guarantee consistently high product quality. Our coolant tubes impress with precise manufacturing, high pressure and temperature resistance, as well as reliable corrosion resistance – even under demanding operating conditions.

**The result:** durable, safe, and high-performance solutions you can rely on at all times. For us, quality is not a promise, but a controlled and documented standard.

## Hoses, Air Supply

### Reliable air, anytime.

Our hoses for air supply are specially designed for use under demanding conditions. High-quality materials provide excellent pressure resistance and high flexibility while maintaining a stable shape.



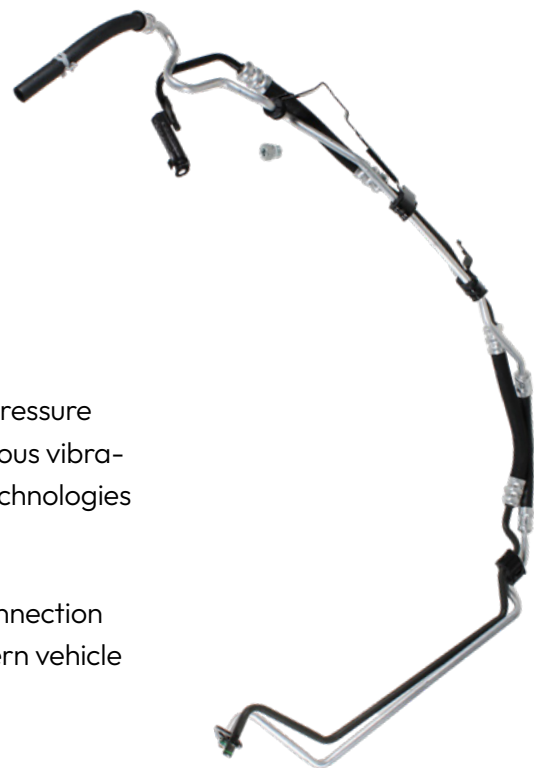
Precise manufacturing ensures secure connections and minimizes pressure loss in the system. Even under temperature fluctuations and dynamic loads, functionality remains reliable. Ideal for automotive systems and anywhere a constant and safe air supply is critical.

## Hydraulic Hoses, Steering

### Direct power transmission. Controlled steering feel. Reliable safety.

Our power steering lines are specifically designed for high pressure requirements, strong temperature fluctuations, and continuous vibration loads. High-quality materials and proven connection technologies ensure maximum sealing and a long service life.

Thanks to installation-optimized geometries and precise connection systems, our solutions enable efficient integration into modern vehicle systems.



Learn  
more

# Crankcase Ventilation Hoses

**Efficient ventilation for controlled pressure balance.**



Crankcase ventilation hoses are essential for the controlled routing of blow-by gases within the engine. They ensure proper pressure equalization and contribute to emission reduction and the longevity of the engine.

Our solutions stand out with high resistance to media and temperature, optimal sealing performance, and long-term dimensional stability – even under demanding operating conditions.



Learn more

# Fuel Lines

**Reliable fuel flow for strong performance and long service life.**

Metzger fuel lines stand for the highest quality and precise fit. They ensure a reliable fuel supply to the engine and meet all safety-relevant standards.



Learn more

## Intake hoses, Air filter

**Maximum air.  
Maximum performance.**



Efficient airflow is crucial for overall performance. Our air intake hoses combine flexibility, stability, and flow-optimized design into a high-performance solution.

They reduce pressure losses, support filtration performance, and ensure a consistent air supply – even under changing conditions. Robust, easy to install, and designed for maximum efficiency.

---

## Air Conditioning Lines

**Reliable operation even under extreme pressure  
and temperature loads.**

Our air conditioning lines represent the highest precision in design and manufacturing. High-quality materials, optimized wall constructions, and durable connection technologies ensure long-term tightness and resistance to pressure pulses, vibrations, and thermal cycling.



Learn  
more

# Universal Hoses from Metzger Autoteile

## Radiator Hoses

### Optimal operating temperature in all conditions.

Robust and durable: Radiator hoses from Metzger Autoteile are made from high-quality, heat- and pressure-resistant materials that ensure long durability and effective heat dissipation even under extreme conditions. For optimum operating temperature, efficiency and safety of modern engines.

#### Radiator Hoses SAE J20 R3 D1



#### Material & Specifications

- Exterior: black PEC-reinforced EPDM rubber (ethylene-propylene-diene, M-group)
- Interior: black EPDM rubber (ethylene-propylene-diene, M-group)
- Suitable for general hot and cold water transfer under low pressure
- Temperature resistance: -40 °C to +125 °C
- Operating pressure: 7 bar
- Burst pressure: 18 bar



Learn  
more



## What exactly is the difference between a spool and a coil?

#### Spool:

The product is wound onto a stable carrier (spool). A solid core ensures dimensional stability.



#### Coil:

The product (hose or line) is wound freely and typically secured with straps or film. It has no solid core or carrier.



# Quality Fuel Hoses.

Petrol, Diesel, Biodiesel and other fluids – all our hoses offer excellent durability against chemicals in fuels, cleaning agents and solvents. Besides, our hoses are highly resistant against both aging and weather influences.

## Fuel Hoses SAE J30 R6



### Material & Specifications

- Exterior: fuel, oil and ozone resistant PVC reinforced Nitrile Butadiene Rubber (NBR)
- Interior: fuel and oil resistant NBR
- Suitable for petrol (E5, E10, E15, E85), diesel and biodiesel (B10, B20)
- Temperature resistance -40°C to +110°C
- Working pressure: 10 bar
- Burst pressure: 18 bar (Art. No. 2152030: 12 bar)

## Fuel Hoses DIN 73379 TYP 2A



### Material & Specifications

- Exterior: Chloroprene Rubber (CR)
- Interior: fuel and oil resistant NBR
- Suitable for petrol (E5, E10, E15, E85), diesel and biodiesel (B10, B20)
- Temperature resistance -40°C to +90°C
- Working pressure: 10 bar
- Burst pressure: 30 bar

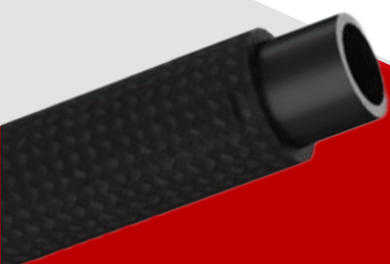
## Fuel Hoses DIN 73379



### Material & Specifications

- Exterior: reinforced textile mesh
- Interior: fuel and oil resistant Nitrile Butadiene Rubber (NBR)
- Suitable for petrol (E5, E10, E15, E85), diesel and biodiesel (B10, B20)
- Temperature resistance -40°C to +110°C
- Working pressure: 10 bar
- Burst pressure: 30 bar

## Fuel Hoses DIN 73379 TYP B



### Material & Specifications

- Exterior: reinforced textile mesh
- Interior: fuel and oil resistant Nitrile Butadiene Rubber (NBR)
- Suitable for petrol (E5, E10, E15, E85), diesel and biodiesel (B10, B20)
- Temperature resistance -40°C to +90°C
- Working pressure: 10 bar
- Burst pressure: 30 bar



All hoses with the sales unit type "spool" are ready for use with the

**Metzger Hose Spool Stand,**  
Art. No. 2152099.

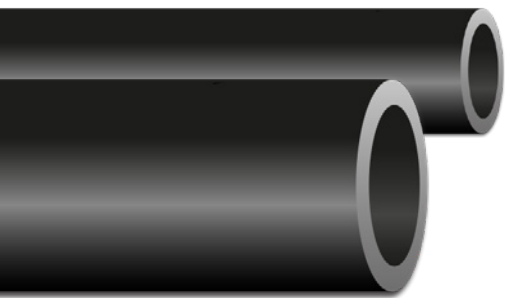


Learn  
more

# Vacuum Hoses

## Essential for Precise Control and Regulation.

Metzger vacuum hoses are specifically designed to meet the demands of transmitting control pressures and regulating vehicle systems. High-quality materials and proven manufacturing standards ensure exceptional durability and reliable long-term performance.



### Vacuum Hoses DIN 73379 TYP B

#### Material & Specifications

- Exterior: fuel and oil resistant Epichlorohydrin rubber (ECO)
- Interior: fuel and oil resistant Epichlorohydrin rubber (ECO)
- suitable for unpressurized transfer of fuel and oil
- Temperature resistance: -40 °C to +135 °C



Learn more

# Wash Water Pipes

## Reliable components for a clear view.

Our wash water pipes are made of robust materials that guarantee a long service life as well as reliable performance. Resistant to chemicals in cleaning agents, ensuring a perfect fit and easy installation, they provide the ideal solution for workshops and retailers who value quality and longevity.

#### Material & Specifications

- Exterior: transparent polyvinyl chloride (PVC)
- Interior: transparent polyvinyl chloride (PVC)
- Suitable for all types of liquids, air and mild chemicals
- Temperature resistance: +5 °C to +70 °C
- Operating pressure: 3 bar
- Burst pressure: 10 bar



Learn more

# Additional hoses and lines

from the extensive range of Metzger Autoteile



**Pipelines,  
EGR valve**



**Brake Hoses**



**Breather Hoses,  
expansion tank**



**Breather Hoses,  
fuel tank**



**Heater Hoses**



**High-pressure Pipes,  
injection system**



**Pipelines,  
oil filler neck**



**Fuel Hoses**



**Clutch Lines**



**Oil Cooler Lines,  
automatic transmission**



**Oil Lines,  
charger**



**Oil Hoses**



**Vacuum Lines,  
intake manifold**



**Vacuum Hoses,  
brake booster**

YOUR FIRST PLACE TO LOOK.

- 40,000 products
- Outstanding delivery reliability
- Overnight Service

for a smooth workflow in your workshop. This ensures your work process remains uninterrupted.



## THE FULL RANGE.

Discover nearly 40,000 products, all backed by certified Metzger quality.

## The Full Range.

40,000 products in certified Metzger quality.

Scan and download



# Time is money. Save both with Metzger.

**METZGER COMPETENCE KITS. All in one. All you need.**

Every mechanic knows the frustration: the spare part arrives – but the gasket is missing. The screws don't fit. The repair stalls.

With Metzger COMPETENCE KITS, those days are over. Each COMPETENCE KIT comes complete with the replacement part plus all the necessary accessories and fittings, from gaskets and screws to clips. No extra orders, no missing pieces, and no delays.

**100% complete, ready to install.**



**Competence Kit**  
e.g. Art. No. 2401096



Ready to install:  
**Charge Air Hose with connector**  
and **matching clamp.**

- **Faster processing**
- **More reliable planning**
- **Fewer follow-ups**  
in parts procurement

**Scan to  
learn more**



[www.metzger-autoteile.com/competence-kit](http://www.metzger-autoteile.com/competence-kit)

